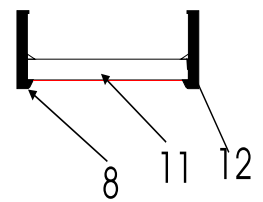


- The & SOURCE Vinyl CALON Premium Cast Series 2500 / 2550 / 2570 Translucent Vinyl Film #33 Red
- Logo & BY CC Vinyl CALON Premium Cast Series 2500 / 2550 / 2570 Translucent Vinyl Film #125 Golden Yellow
- The & BY CC Box Faces CALON Premium Cast Series 2100 / 2200 / 2270 High Performance Vinyl Film EF #03 Black
- Paint Inside Letters Automotive Super Stay White
- Paint Returns & Backboard Automotive Gloss Black
- 1" Black Jewelite Trimcap on All Faces

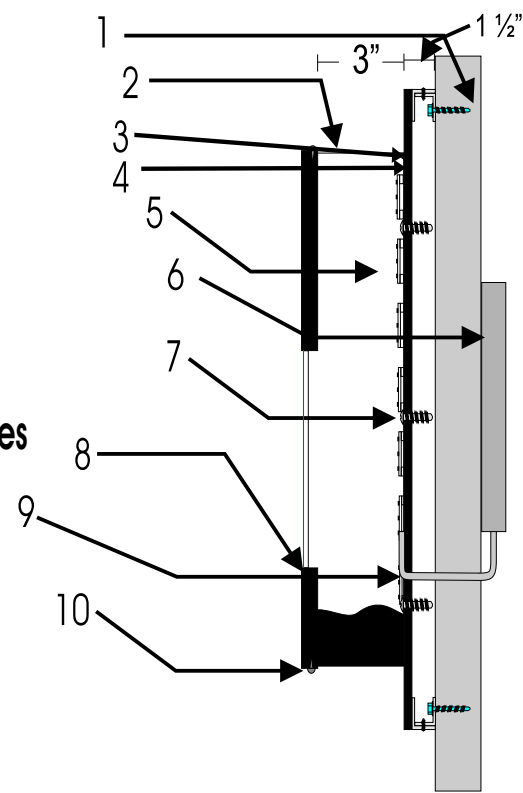


Face Cross Section

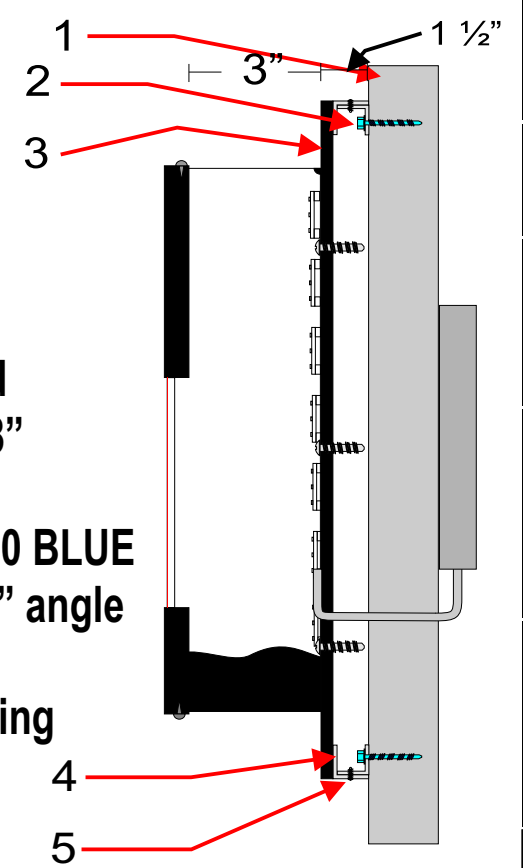


- 1) Existing Bulkhead Wall
- 2) 0.050 aluminum Returns 5" deep  
Painted Gloss Black and glued to backer plate
- 3) Plexus Methacrylate Adhesive Ao420 BLUE
- 4) 0.050 Aluminum Backer plate
- 5) 0.75 Watt Hi-Power White & 0.75 Watt Hi-Power Red LED modules
- 6) 60 Watt 120v input 12v output IP64 power supply
- 7) # 10 x 1" #2 Robertson Screw attaching can to backboard
- 8) 1" Black Jewelite Trimcap
- 9) 2 Cond. 18 S.T.C. Foil Shield Low volt power wire
- 10) #10 x 3/4" #2 Robertson screw mounting trimcap to Return
- 11) 3/16" #2447 LED plastic with Vinyl film applied
- 12) IPS Weld-on #16 Clear, Medium Bodied Solvent Cement for joining Acrylic

Channel letter Cross Section



Backboard Cross Section



- 1) Existing Bulkhead Wall
- 2) Mounting hardware mounting  
1 1/4" x 1 1/4" x 1/4" angle  
to bulkhead wall
- 3) 1/8" Aluminum Sheet for Backboard
- 4) 1 1/2" x 1 1/2" x 1/4" Angle glued to 1/8" Aluminum Sheet with Plexus Methacrylate Adhesive Ao420 BLUE and mounted to 1 1/4" x 1 1/4" x 1/4" angle mounted to bulkhead wall
- 5) #10 x 1" #2 Robertson screw attaching angles together

Date: 01/27/2009

Date Revised:

Project:  
Store # 5229  
Centre Mall  
Hamilton ON.

Designed By:  
GRAPHICS DEPT

Drawing:  
Manufacture

Scale:  
NTS

Drawing No.:

1



Art work done by: Jay Berry  
World Of Lights LED Solutions Inc.

Ph. (905) 333-0113 Fx. (905) 333-0103 E-mail: jay@ledsolutions.ca

World Of Lights  
LED Solutions Inc.  
1163 King Road, Unit 7  
Burlington, ON. Canada L7R 3X5



No portion of this drawing may be copied or reproduced in whole or in part by any means without the written permission of World of Lights. Legal action will be taken if these regulations are not followed.

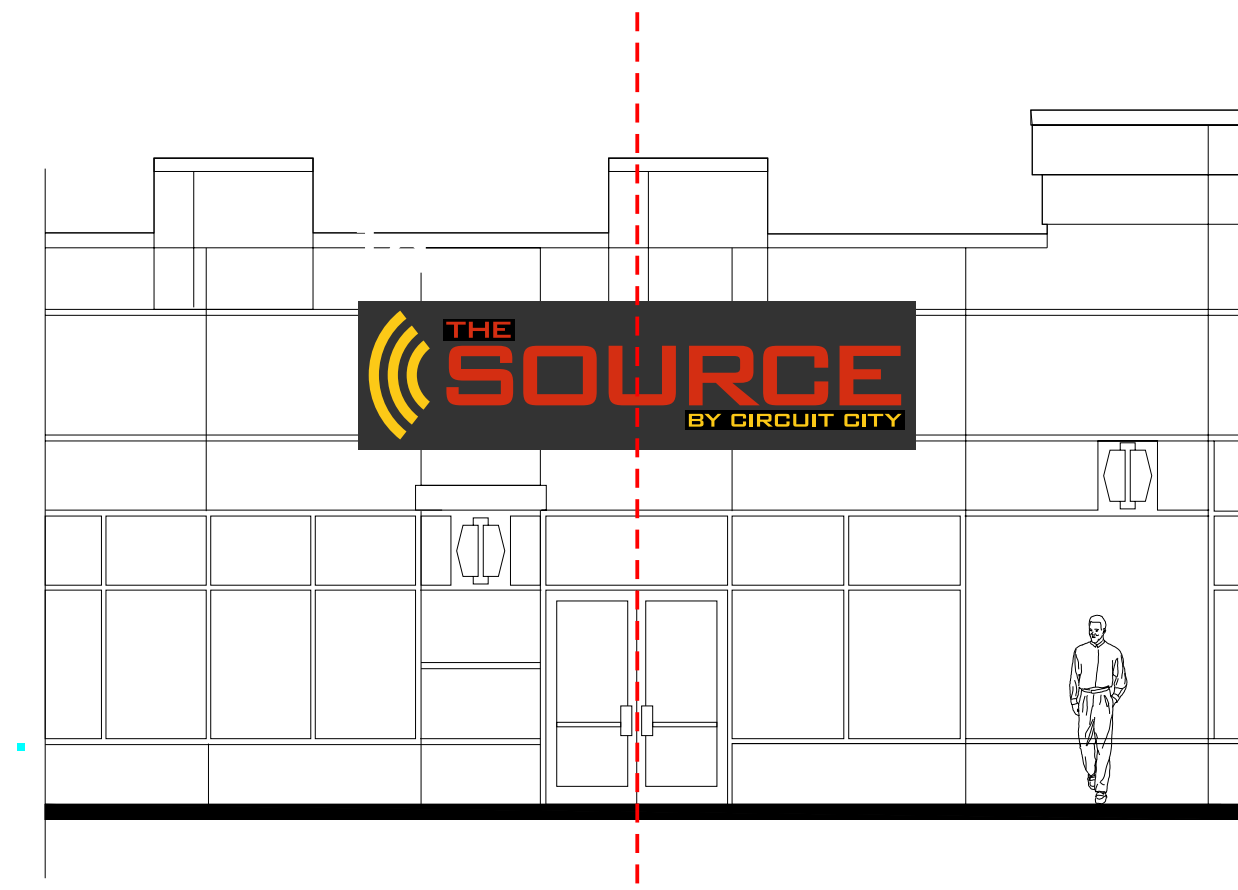
# Elevation For Centre Mall, Hamilton, ON. The Source By CC Store # 5229

## Front Elevation

Scale : NTS.

### Store Front Sign

To be installed centred  
to the double doors

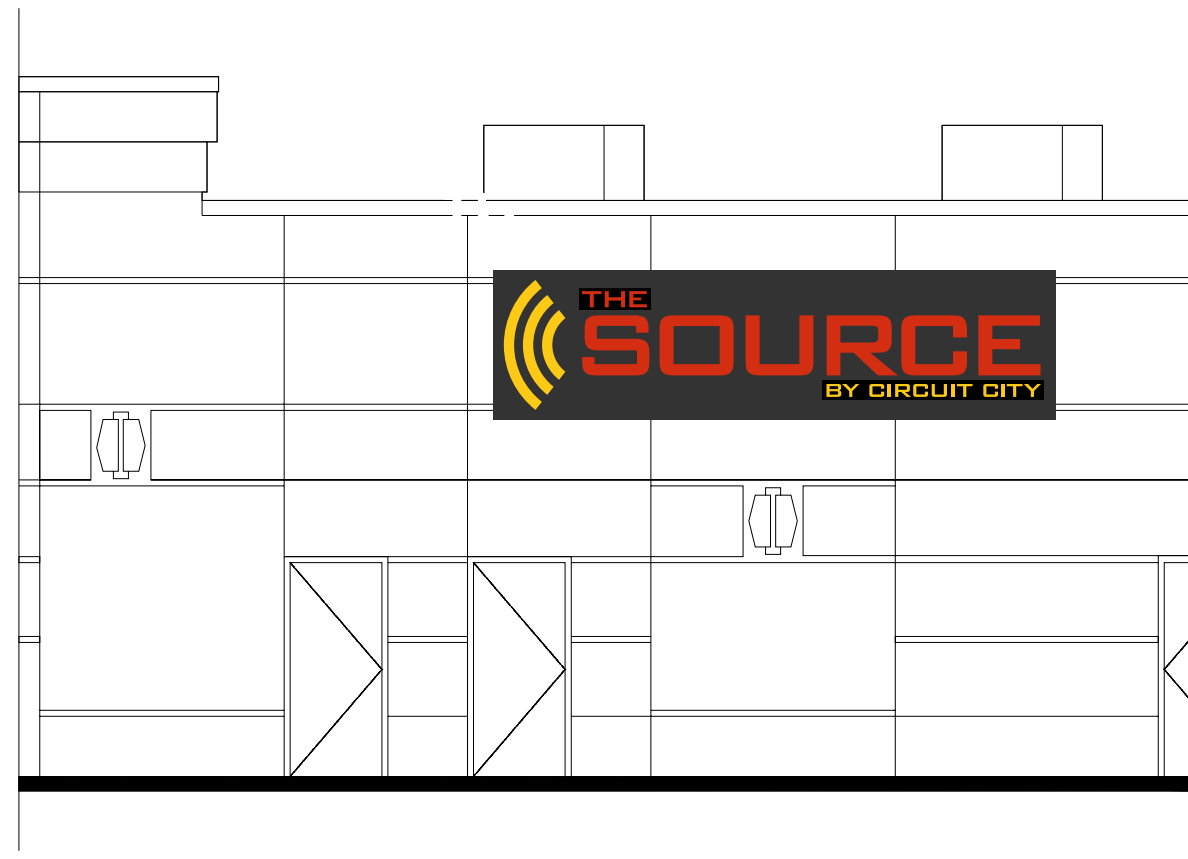


## Rear Elevation

Scale : NTS.

### Rear Sign

To be installed centred  
in Client's available Space  
(Sign position shown may not be exact)



Date: 01/27/2009

Date Revised:

Project:  
Store # 5229  
Centre Mall  
Hamilton ON.

Designed  
By:  
GRAPHICS DEPT

Drawing:  
Elevations

Scale:  
NTS

Drawing  
No. :

2



Art work done by: Jay Berry  
World Of Lights LED Solutions Inc.

Ph. (905) 333-0113 Fx. (905) 333-0103 E-mail: jay@ledsolutions.ca

World Of Lights  
LED Solutions Inc.  
1163 King Road, Unit 7  
Burlington, ON. Canada L7R 3X5



No portion of this drawing  
may be copied or  
reproduced in whole or in  
part by any means without  
the written permission of  
World of Lights. Legal action  
will be taken if these  
regulations are not followed.

# LED Layout For The Source By CC 4' Set

## White LEDs

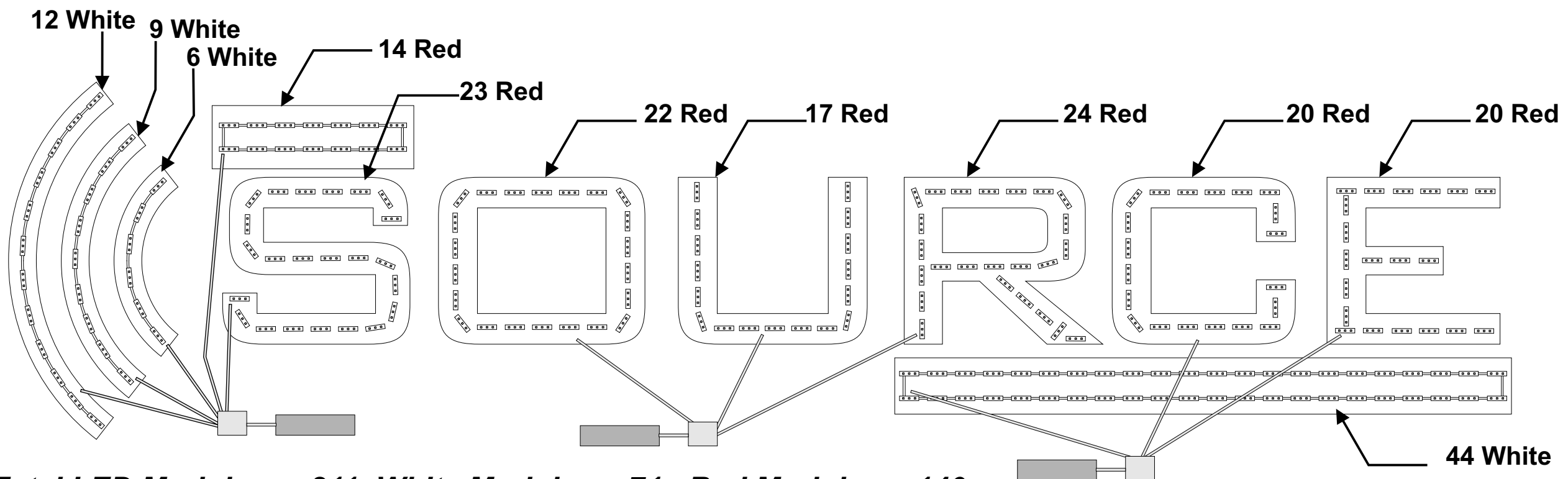
0.75 Watt Ip64 Hi-Powered LEDs  
 3 LEDs per Module  
 80 LEDs modules to a 60 Watt Power Supply  
 200 LEDs modules to a 150 Watt Power Supply

## Red LEDs

0.75 Watt Ip64 Hi-Powered LEDs  
 3 LEDs per Module  
 80 LEDs modules to a 60 Watt Power Supply  
 200 LEDs modules to a 150 Watt Power Supply

## Power Supply

Class 2 power supply  
 120v input 12v / 5amp / 60w output  
 Ip64



**Total LED Modules = 211 White Modules = 71 Red Modules = 140**

Date: 01/27/2009

Date Revised:

Project:

Store # 5229  
 Centre Mall  
 Hamilton ON.

Designed By:  
 GRAPHICS DEPT

Drawing:

LED Layout and Information

Scale:  
 NTS

Drawing No. :

**3**



Art work done by: Jay Berry  
 World Of Lights LED Solutions Inc.

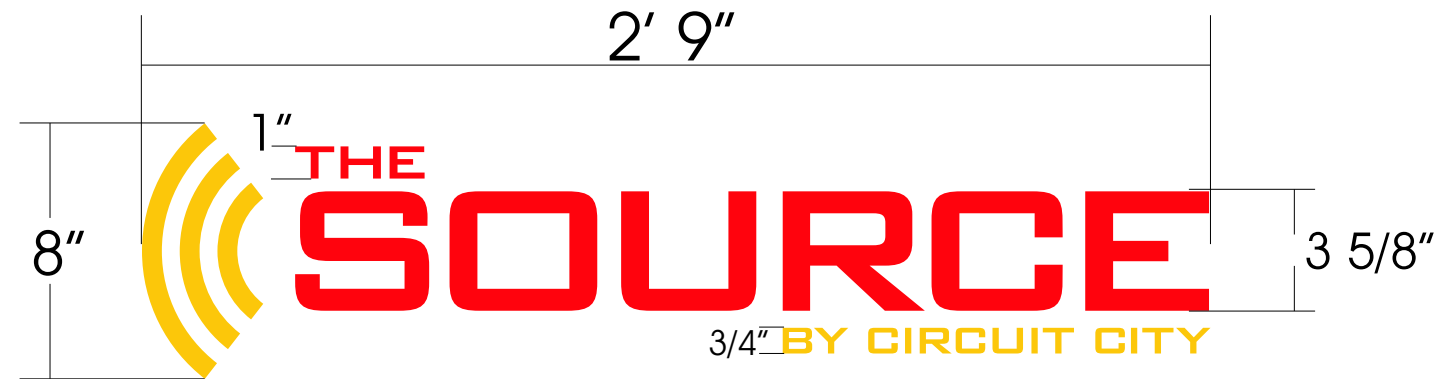
Ph. (905) 333-0113 Fx. (905) 333-0103 E-mail: jay@ledsolutions.ca

World Of Lights  
 LED Solutions Inc.  
 1163 King Road, Unit 7  
 Burlington, ON, Canada L7R 3X5

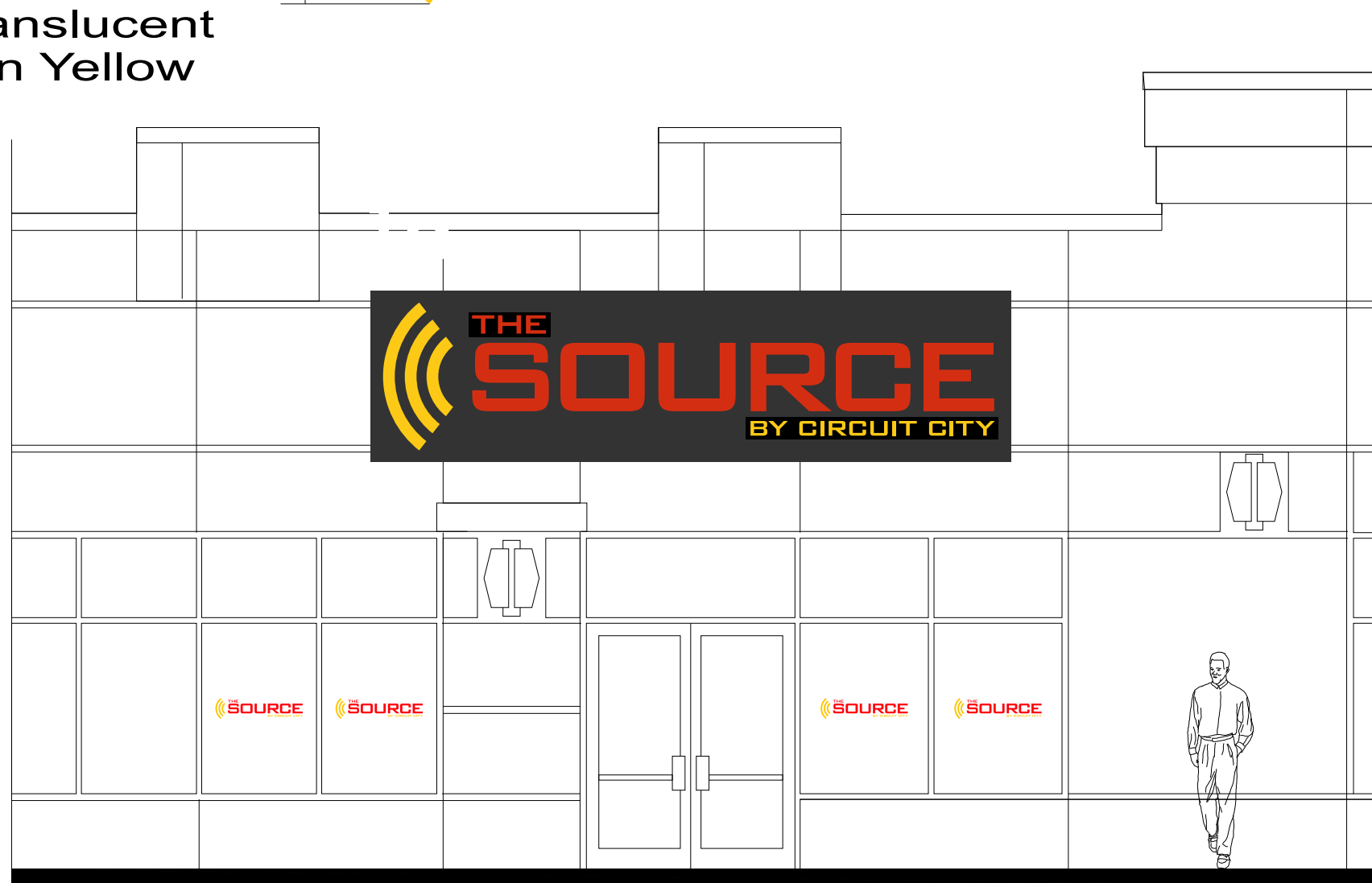


No portion of this drawing may be copied or reproduced in whole or in part by any means without the written permission of World of Lights. Legal action will be taken if these regulations are not followed.

- The & SOURCE Vinyl  
CALON Premium Cast Series  
2500 / 2550 / 2570 Translucent  
Vinyl Film #33 Red
- Logo & BY CC Vinyl  
CALON Premium Cast Series  
2500 / 2550 / 2570 Translucent  
Vinyl Film #125 Golden Yellow



4 Sets of Window  
Vinyl Graphics  
Installed on centre  
of windows



# Window Graphics



Date: 01/27/2009

Date Revised:

Project:

Store # 5229  
Centre Mall  
Hamilton ON.

Designed  
By:  
GRAPHICS DEPT

Drawing:

Store Front  
Window Vinyl

Scale:  
NTS

Drawing  
No. :

4



Art work done by: Jay Berry  
World Of Lights LED Solutions Inc.

Ph. (905) 333-0113 Fx. (905) 333-0103 E-mail: jay@ledsolutions.ca

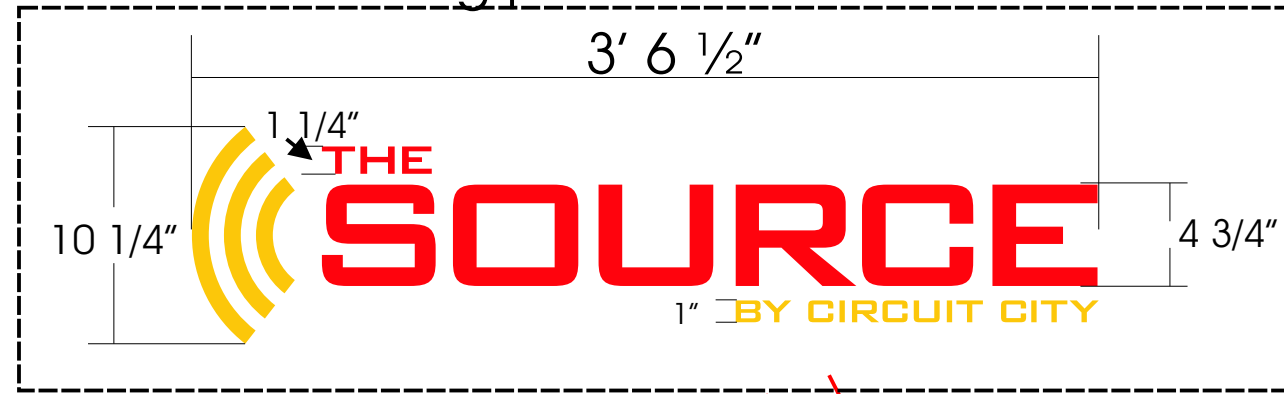
World Of Lights  
LED Solutions Inc.  
1163 King Road, Unit 7  
Burlington, ON. Canada L7R 3X5



No portion of this drawing  
may be copied or  
reproduced in whole or in  
part by any means without  
the written permission of  
World of Lights. Legal action  
will be taken if these  
regulations are not followed.

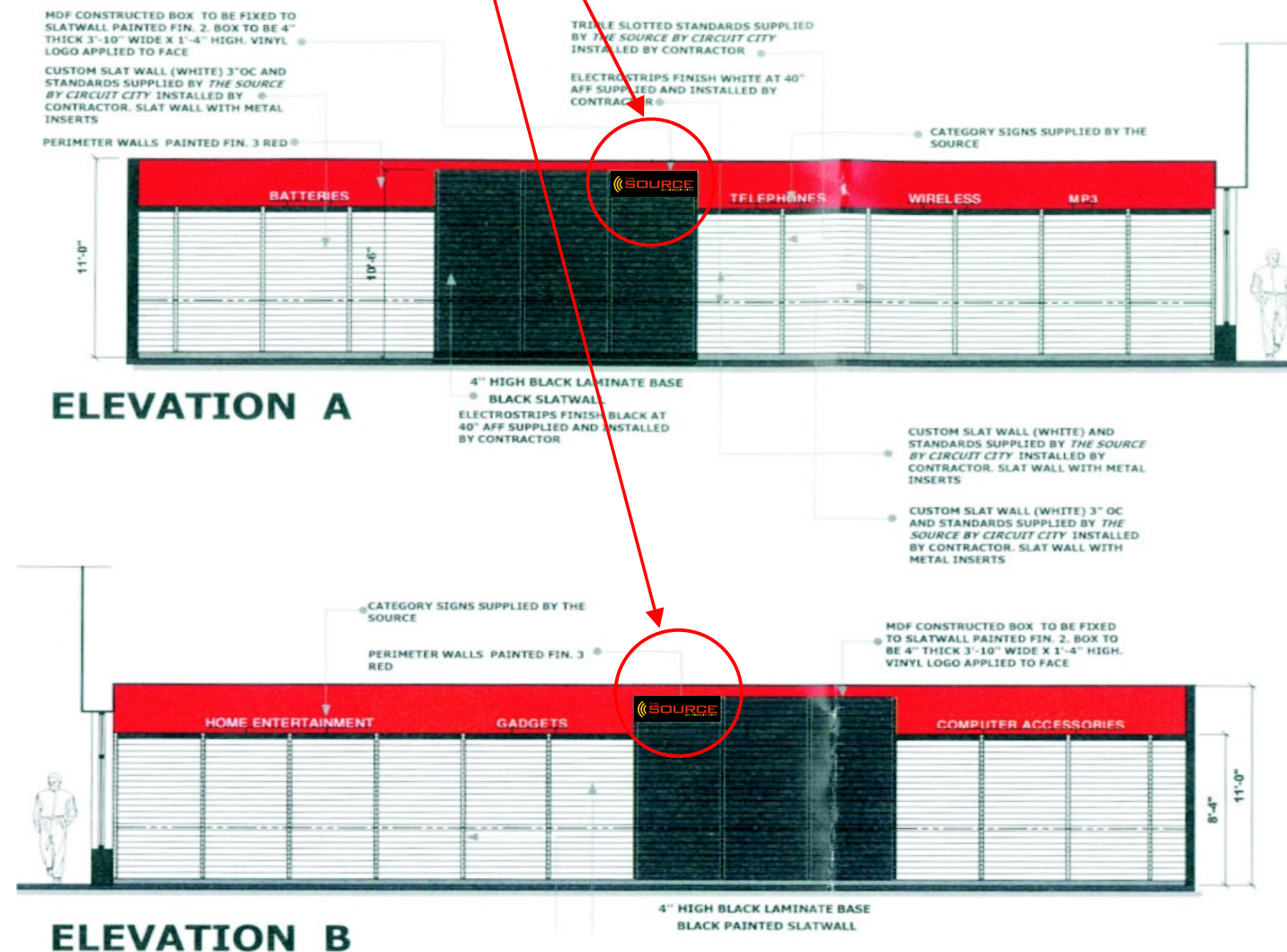
Existing panel 1' 4"

Existing panel 3' 10"



- The & SOURCE Vinyl CALON Premium Cast Series 2500 / 2550 / 2570 Translucent Vinyl Film #33 Red
- Logo & BY CC Vinyl CALON Premium Cast Series 2500 / 2550 / 2570 Translucent Vinyl Film #125 Golden Yellow

2 Sets of Interior Vinyl Graphics Installed on centre of existing panel



Date: 01/27/2009

Date Revised:

Project:

Store # 5229  
Centre Mall  
Hamilton ON.

Designed By:  
GRAPHICS DEPT

Drawing:  
Interior  
Vinyl Graphics

Scale:  
NTS

Drawing No. :

5



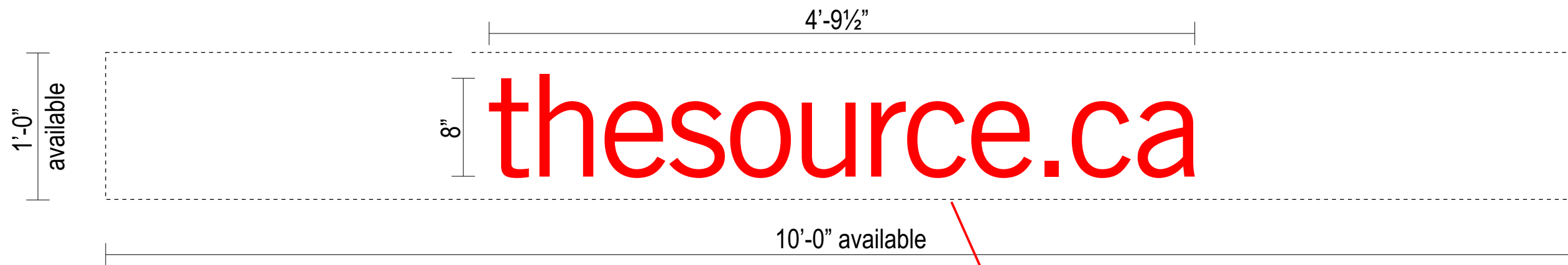
Art work done by: Jay Berry  
World Of Lights LED Solutions Inc.

Ph. (905) 333-0113 Fx. (905) 333-0103 E-mail: jay@ledsolutions.ca

World Of Lights  
LED Solutions Inc.  
1163 King Road, Unit 7  
Burlington, ON. Canada L7R 3X5

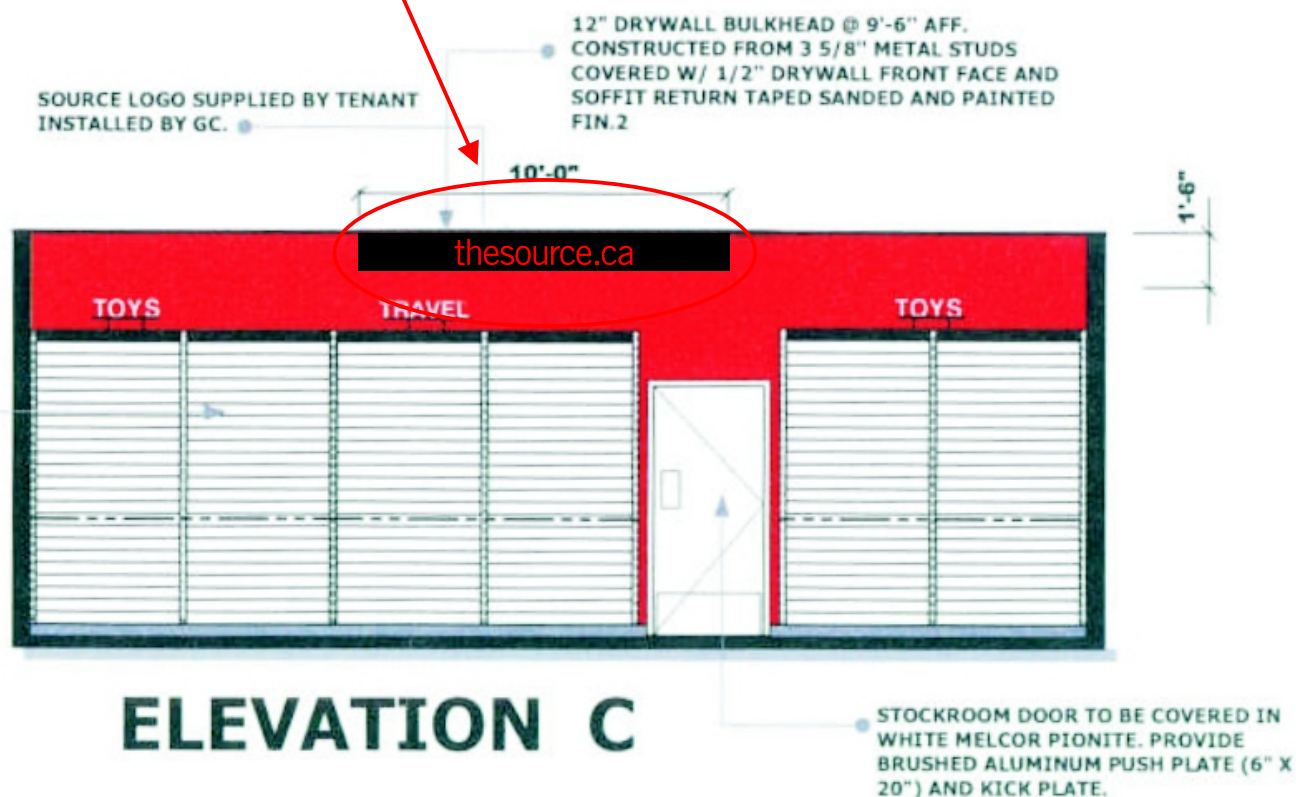


No portion of this drawing may be copied or reproduced in whole or in part by any means without the written permission of World of Lights. Legal action will be taken if these regulations are not followed.



1 Sets of Interior  
Bibond Router Cut  
Letters Installed  
on centre of  
existing panel  
with double sided  
tape & silicone

CUSTOM SLAT WALL (WHITE) 2"OC AND STANDARDS SUPPLIED BY THE SOURCE BY CIRCUIT CITY INSTALLED BY CONTRACTOR. SLAT WALL WITH METAL INSERTS



Date: 01/27/2009

Date Revised:

Project:

Store # 5229  
Centre Mall  
Hamilton ON.

Designed By:  
GRAPHICS DEPT

Drawing:

Interior Letters

Scale:  
NTS

Drawing No. :

6



Art work done by: Jay Berry  
World Of Lights LED Solutions Inc.

Ph. (905) 333-0113 Fx. (905) 333-0103 E-mail: jay@ledsolutions.ca

World Of Lights  
LED Solutions Inc.  
1163 King Road, Unit 7  
Burlington, ON. Canada L7R 3X5



No portion of this drawing may be copied or reproduced in whole or in part by any means without the written permission of World of Lights. Legal action will be taken if these regulations are not followed.